

# **AZURE VILLAS**

# AZURE VILLAS

Welcome home.







## ABOUT US

Azure India Builders is not just a construction firm; it's a legacy of excellence, forged through years of passion, dedication, and a relentless pursuit of perfection. Established with a vision to redefine the standards of construction in India, Azure India Builders has emerged as a beacon of innovation and craftsmanship in the industry.

## OUR VISION

Our vision extends beyond the realms of construction; it's about shaping the future of urban living, redefining lifestyles, and creating sustainable environments that stand the test of time. We envision a tomorrow where innovation meets sustainability, where every structure tells a story of ingenuity and inspiration.



“

If you know you're going home, the journey is never too hard.

”

Angela Wood



**Welcome to Azure Villas**, where luxury meets serenity in the heart of nature's splendor. Nestled in a picturesque setting, each villa in our exclusive enclave has been meticulously designed to offer an unparalleled living experience. Azure Villas promises a lifestyle steeped in elegance and comfort, with bespoke interiors that redefine the essence of luxury living.

Our commitment to excellence is evident in every detail, from the architectural innovation that harmonizes with the environment to the refined finishes that adorn each home. Azure Villas is not just a residence; it's a sanctuary where you can unwind, rejuvenate, and connect with your surroundings in profound ways.

Discover the epitome of sophisticated living at Azure Villas, where every day is an invitation to indulge in the extraordinary. Welcome home.



Live the

Azure

Dream:

Where Comfort Meets Splendor.

















PLOT 8

PLOT 9

PLOT 10

PLOT 11

PLOT 7

PLOT 1

PLOT 6

PLOT 2

PLOT 5

PLOT 4

PLOT 3





**Type A - 1825 sqFt**

**Plots - 1,2,3,5,6,11**



Ground Floor



First Floor

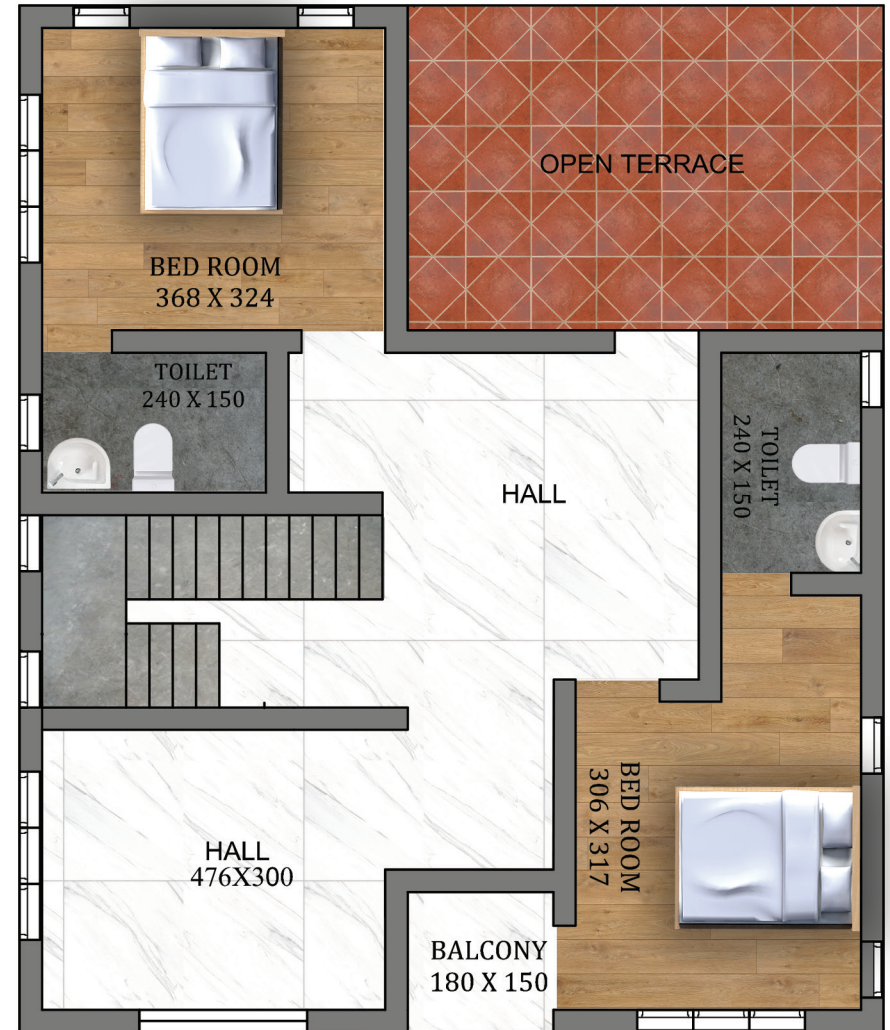


**Type B - 2001 sqFt**

**Plots - 9,10**



Ground Floor



First Floor





**Type C - 1726 sqFt**

**Plot - 8**



Ground Floor



First Floor



**Type D - 1815 sqFt**

**Plot - 7**



Ground Floor



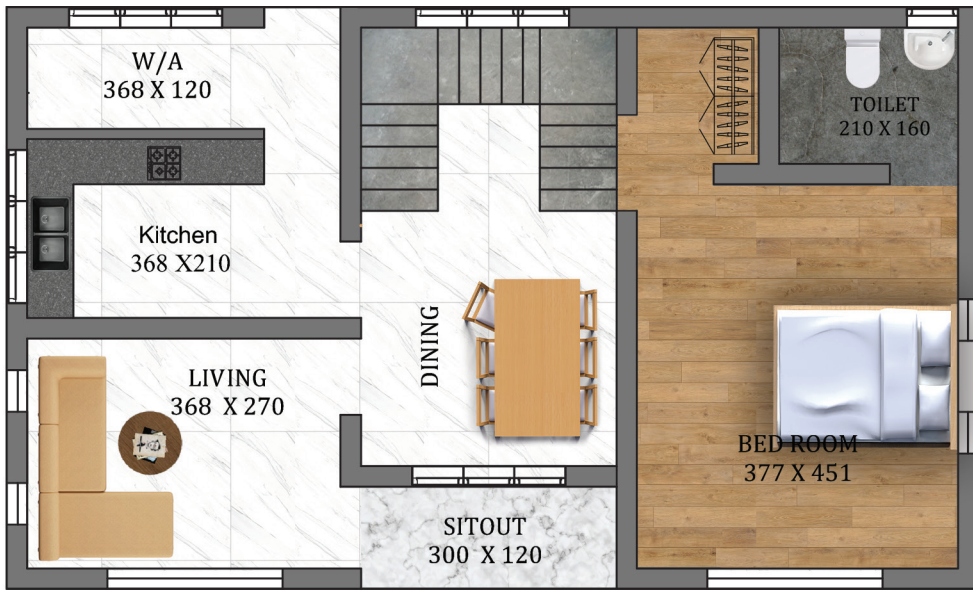
First Floor





**Type E - 1570 sqFt**

**Plot - 4**



Ground Floor



First Floor



Gather,  
Relax,  
Enjoy.

GYM  
CHILDREN'S PLAY AREA  
MULTI PURPOSE HALL  
PARTY AREA





Azure India

Club House

4A



# AMENITIES



A/C GYM

Indoor play area

Landscaped Garden  
with ample Open space

24hrs CCTV surveillance

Intercom

Provision for round the clock security

EV charging points at all parking

Provision for Optical Fibre Internet  
connection for all apartments

After Sales Customer Assistance



# SPECIFICATIONS



**Flooring:** Superior quality vitrified tiles in living, dining and bedrooms. Superior quality ceramic / vitrified tiles in Kitchen Kitchen: Kitchen counter with granite top and stainless steel single bowl sink, 60cm height ceramic tile dado over kitchen working counter, Provision for water purifier.

**Toilet:** Ceramic tiles for floors and walls upto a height of 210cm. Premium brand sanitary fixtures (white or off white) . Provision for water heater and hot water in all bathroom showers. Provision for fixing exhaust fans.

**Doors and Windows:** Front door frame and paneled doors with good quality teak wood. Hardwood door frames with veneer flash door or moulded panel doors for all rooms except bathrooms. Bathroom doors will be laminated flush doors / UPVC doors / FRP. Fully glazed superior quality UPVC windows and ventilator shutters with safety MS grills.

**Painting:** Internal walls will be finished with putty and emulsion paint. Doors, grills and handrails will be finished with enamel paint.

**Electrical:** All electrical lines shall be concealed conduit copper wiring with modular switch/socket/plugs. Adequate light and fan points, 5 and 15 amps plug points. All materials used shall be of ISI standards. Selection of the brands are at the discretion of the builders.

**Water supply:** Heavy grade PVC pipes shall be used for cold water lines and UPVC pipes for hot water lines wherever necessary.



# TIMELINE

10 MONTHS FOR A UNIT

2 MONTHS



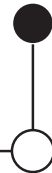
## PHASE 1

Allotment

Completion of  
Foundation and  
Basement work

Completion of Ground  
Floor roof slab  
(Basement work,  
lintel, sunshade)

3 MONTHS



## PHASE 2

Completion of First  
Floor brick work

Completion of internal  
plastering

Completion of  
external plastering

3 MONTHS



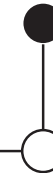
## PHASE 3

Completion of internal  
and external putty  
work

Completion of Joinery  
work (windows and  
grills)

Completion of tiling  
electrical and  
plumbing

2 MONTHS



## PHASE 4

Completion of internal  
and external painting

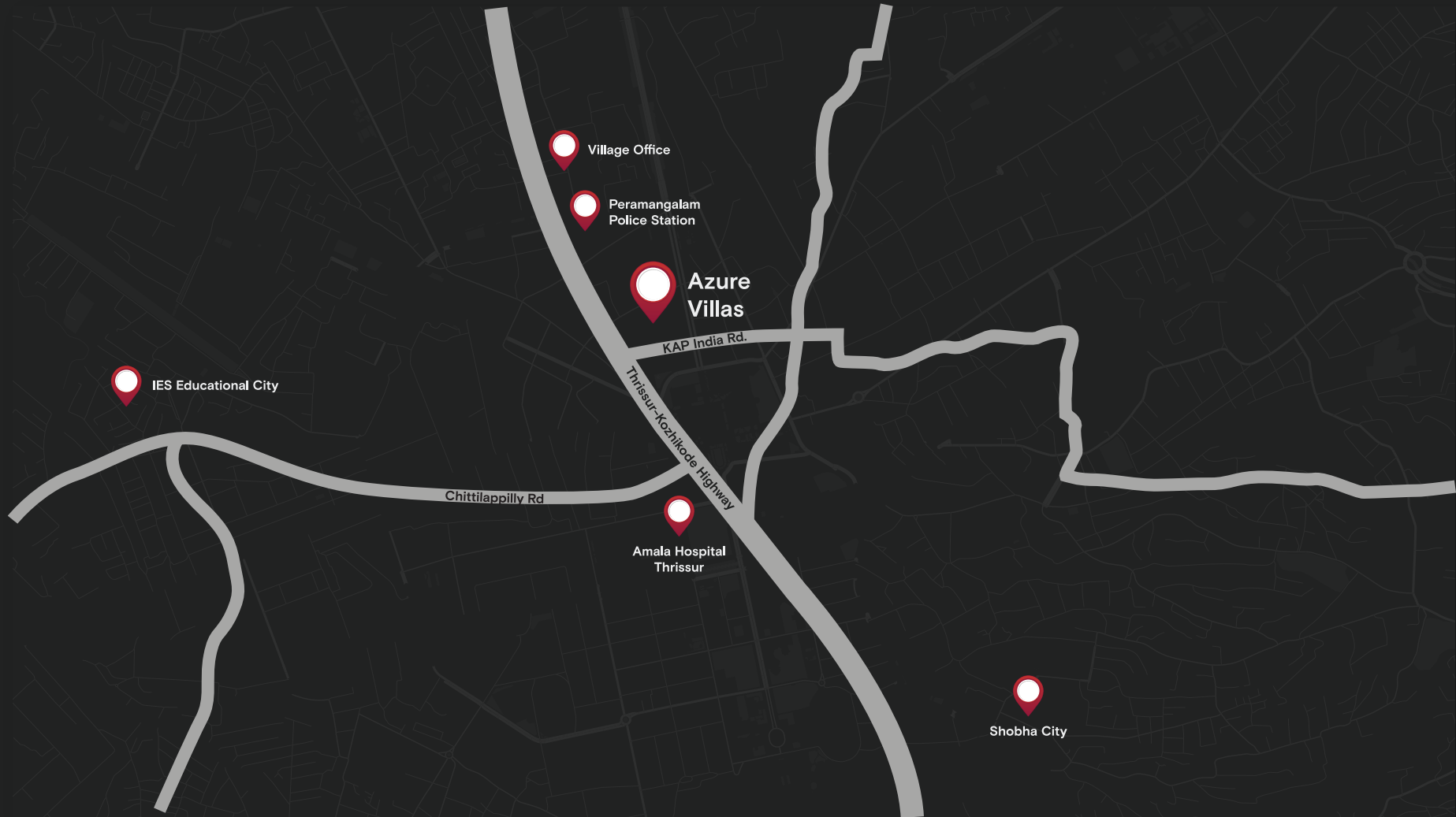
Completion of  
compound wall, gate,  
interlock

\*Timeline may vary according to site conditions





# LOCATION MAP



Temple, Mosque and Church - 1.5 Km radius  
IES School & Engineering college - 3 Km  
Amala medical college - 800 meters

Sobha City - 3 Km  
Police Station - 200 meters  
Nearest bus stop - 200 meters



## DISCLAIMER

This document is conceptual and not a legal offering by the Company for advertising and is to be used for general information only. Any interested party should verify all the information including designs, plans, specifications, facilities, features, payment schedules, terms of sales etc independently with the Company prior to concluding any decision for buying in any of the project. The user of the Brochure confirms that he/she has not solely relied on this information for making any booking/purchase in any project of the Company.

The visuals and information contained herein marked as “artistic impression” are artistic impressions being indicative in nature and are for general information purposes only. The visuals contained marked as “generic image” and other visuals/image/photographs are general images and do not have any correlation with the project.

The imagery used on the brochures / e-brochures / Whatsapp Images may not represent actuals or may be indicative of style only. Photographs of interiors, surrounding views and location may not represent actuals or may have been digitally enhanced or altered. These photographs may not represent actuals or may be indicative only. Computer generated images, walkthroughs and render images are the artist’s impression and are an indicative of the actual designs. No information given on this brochure / e-brochure / Whatsapp Images creates a warranty or expand the scope of any warranty that cannot be disclaimed under the applicable laws.

The information on this brochure/e-brochure/Whatsapp Images are presented as general information and no representation or warranty is expressly or impliedly given as to its accuracy. While enough care is taken by the Company to ensure that information in the brochure / e-brochures/ Whatsapp Images are up to date, accurate and correct, the readers / users are requested to make an independent enquiry with the Company before relying upon the same. Nothing on the brochure/e-brochures/ Whatsapp Images should be misconstrued as advertising, marketing, booking, selling or an offer for sale or invitation to purchase a unit in any project by the Company. The Company is not responsible for the consequences of any action taken by the viewer relying on such material/information on this brochure/ e-brochures/Whatsapp Images without independently verifying with the Company.





[rera.kerala.gov.in](http://rera.kerala.gov.in)



**K-RERA/PRJ/TSR  
/2024/087**

**Azure India Builders Pvt Ltd**

FIRST FLOOR, Aricaria Jyoti Nest,  
Punkunnam, Thrissur, Kerala 680002

+91 81291 29156, +91 98338 94200  
+971 56 99 60 216

azureindiabuilders@gmail.com